

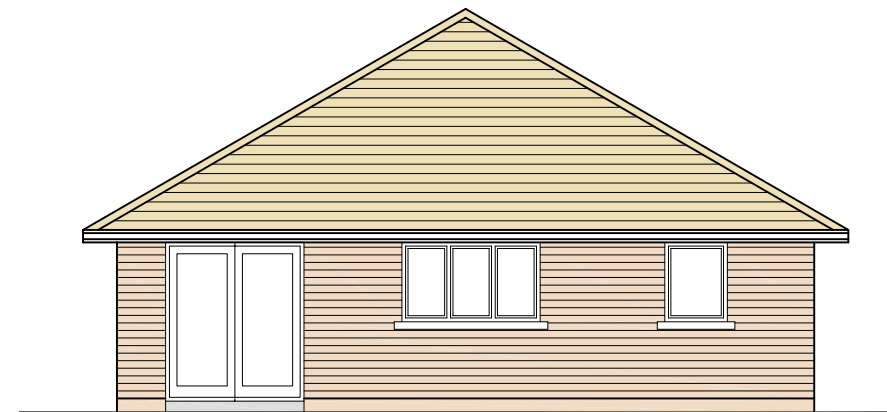
Ground Floor Plan 1:100

The Kilshannig 4 Room Type - Ground Floor	METRIC		IMPERIAL	
	A	B	A	B
Living	4945mm	3847mm	16' 2"	12' 6"
Kitchen/Dining	3733mm	6663mm	12' 3"	21' 8"
Utility	2378mm	1850mm	7' 8"	6' 1"
Bedroom 1	3720mm	3535mm	12' 2"	11' 6"
En-Suite	1940mm	1850mm	6' 3"	6' 1"
Bedroom 2	3655mm	2809mm	11' 10"	9' 2"
Bedroom 3	3000mm	3535mm	9' 8"	11' 6"
Bedroom 4	2650mm	3535mm	8' 7"	11' 6"
Bathroom	2065mm	3347mm	6' 8"	10' 9"
		126.5sqm		1360sq ft

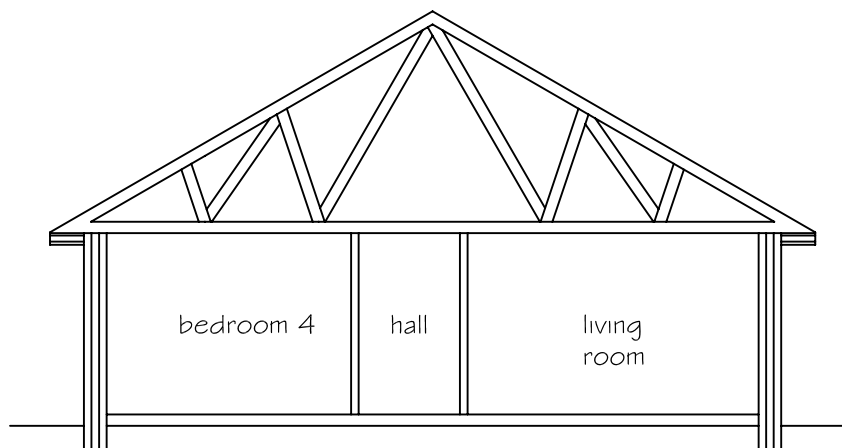
All measurements approx. The plan shown in this booklet is illustrative form only



Front elevation 1:100



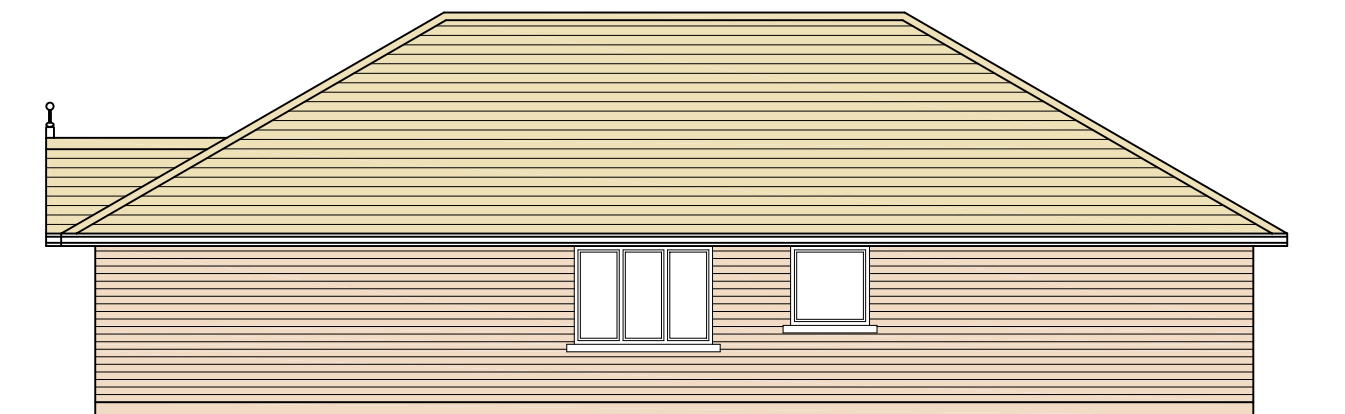
Rear elevation 1:100



Section



Left Side elevation 1:100



Right Side elevation 1:100

SCHEDULE OF EXTERNAL FINISHES

- ROOF
Concrete roof tile - colour - brown (to approved selection)
- WALLS
Brick finish from an approved selection as agreed with the planning authorities
- WINDOWS & DOORS
To be u.P.V.C - colour white/hardwood
Front door (Teak) with wood stain finish to client selection
- FASICA/soffit boards etc.
To be u.P.V.C. - colour white
- DOWNPIPES etc.
To be extruded aluminum - white



THE KILSHANNIG 4

4 BEDROOM DETACHED BUNGALOW